

## BILLARD FIXTURE INSTALLATION INSTRUCTIONS

Please read carefully and save these instructions, as you may need them a later date.

### CAUTION

Turn off the main power at the circuit breaker before installing the fixture, in order to prevent possible shock.

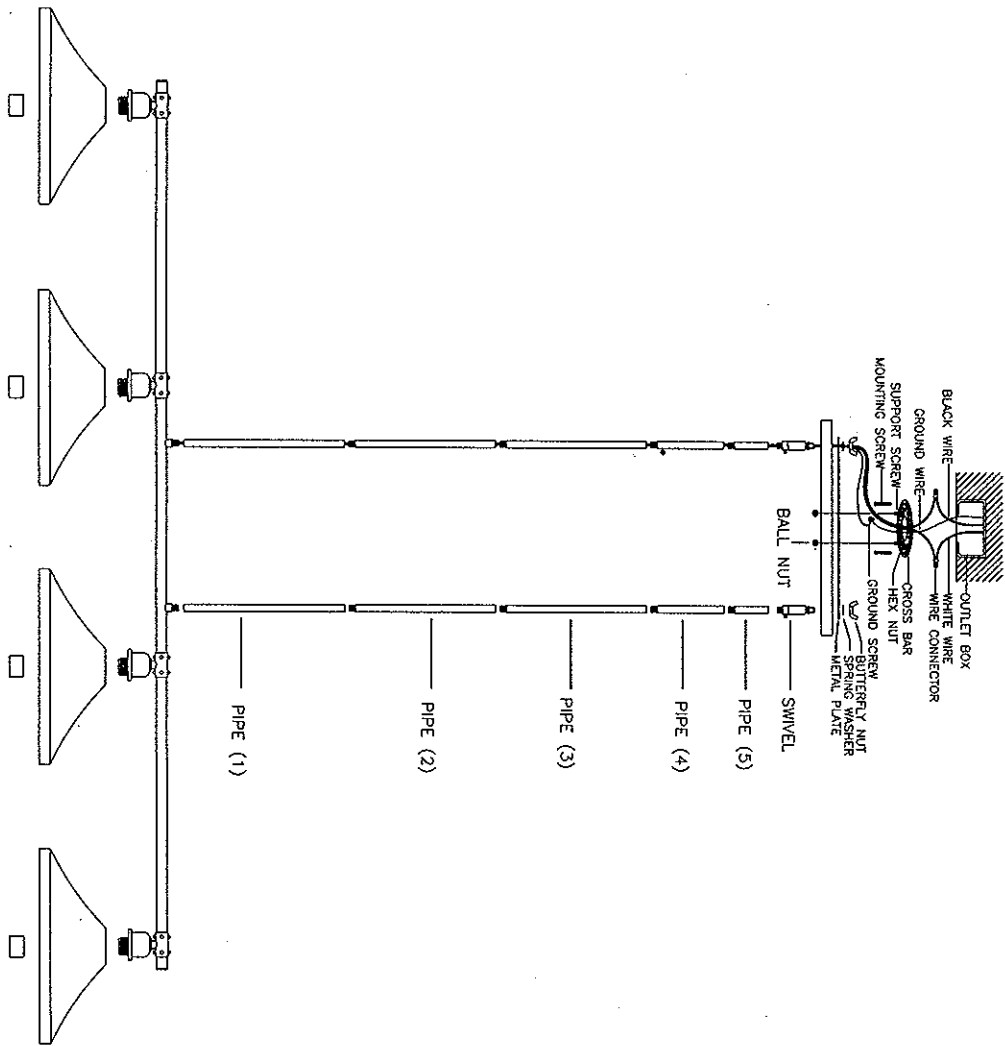
### GENERAL

All electrical connections must be in accordance with local and National Electrical Code (N.E.C.) standards. If you are unfamiliar with proper electrical wiring connections obtain the services of a qualified electrician. Remove the fixture and the mounting package from the box and make sure that no parts are missing by referencing the illustrations on the installation instructions.

### ASSEMBLY AND INSTALLATION

- Connect the Pipe (1),(2),(3),(4), (5) together with the fixture. Then screw with the Swivel.
- Then attach the CROSS BAR to the OUTLET BOX by the two MOUNTING SCREWS.
- Screw the butterfly nut, key washer, Metal plate and from the Swivel.
- Make wire connections:
  - Twist together the white wire from the fixture with the white wire from outlet box. Cover with wire connector
  - Twist together the black wire from the fixture with the black wire from outlet box. Cover with wire connector
  - Loop the GROUND WIRE to CROSS BAR with a GROUND SCREW.
- Place the CANOPY against the OUTLET BOX by screwing the Ball Nut
- Attach the SHADE (not included) onto the SOCKET, screw SOCKET RING tightly.
- Install bulbs. (Please do not exceed the maximum capacity which is recommended on the sockets).

INSTALLATION IS NOW COMPLETED.



ITEM NO. 1744